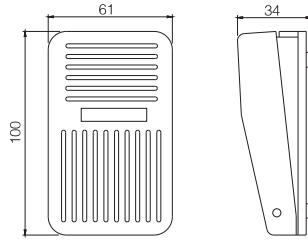


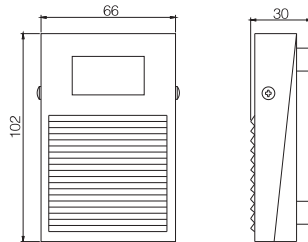
□ 外形尺寸/技术参数 Dimensions / Specification

• XF-01



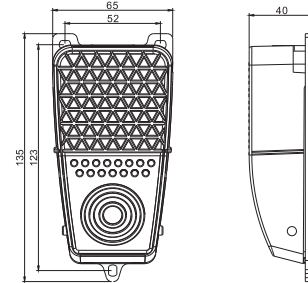
材 质 Material	ABS工程塑料(Plastic)
内置开关 Inner Switch	XV-15-1C25
额定负载 Rating Load	10A/250VAC
触点形式 Contact Form	1C
引出电缆 Outgoing Cable	0.5mm ² × 3芯(Wire) × 0.25m
防护等级 Protection Degree	IP54

• XF-1



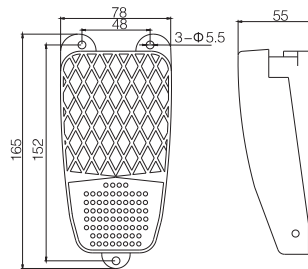
材 质 Material	钢板(Steel)
内置开关 Inner Switch	XV-15-1C25
额定负载 Rating Load	10A/250VAC
触点形式 Contact Form	1C
引出电缆 Outgoing Cable	0.5mm ² × 3芯(Wire) × 1m
防护等级 Protection Degree	IP54

• XF-2



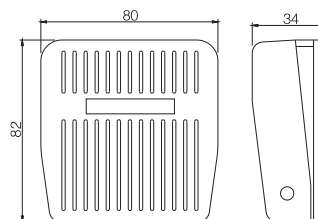
材 质 Material	铝合金(Aluminium)
内置开关 Inner Switch	XV-15-1C25
额定负载 Rating Load	10A/250VAC
触点形式 Contact Form	1C
引出电缆 Outgoing Cable	0.5mm ² × 3芯(Wire) × 0.25m
防护等级 Protection Degree	IP54

• XF-3



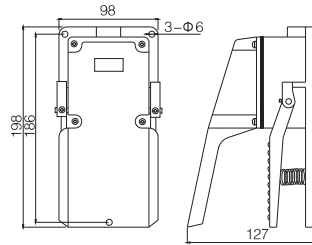
材 质 Material	铝合金(Aluminium)
内置开关 Inner Switch	XV-15-1C25
额定负载 Rating Load	10A/250VAC
触点形式 Contact Form	1C
引出电缆 Outgoing Cable	0.5mm ² × 3芯(Wire) × 0.25m
防护等级 Protection Degree	IP54

• XF-201



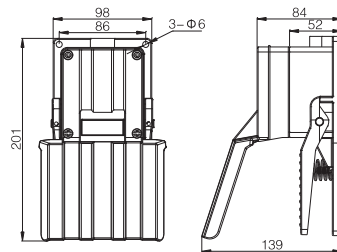
材 质 Material	ABS工程塑料(Plastic)
内置开关 Inner Switch	XV-15-1C25
额定负载 Rating Load	10A/250VAC
触点形式 Contact Form	1C
引出电缆 Outgoing Cable	0.5mm ² × 3芯(Wire) × 0.25m
防护等级 Protection Degree	IP54

• XF-302



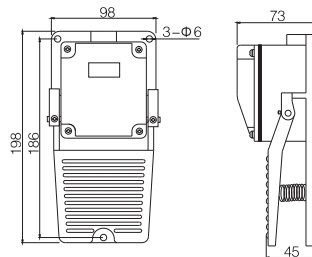
材 质 Material	铝合金(Aluminium)
内置开关 Inner Switch	XZ-15GW22-B
额定负载 Rating Load	15A/250VAC
触点形式 Contact Form	1C
引出电缆 Outgoing Cable	--
防护等级 Protection Degree	IP65

• XF-302C



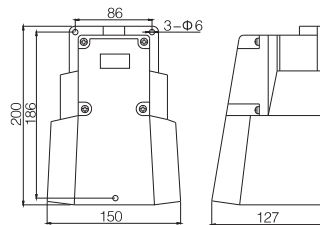
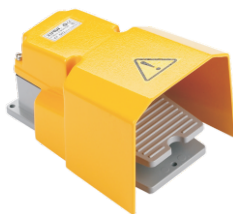
材 质 Material	铝合金(Aluminium)
内置开关 Inner Switch	XZ-15GW22-B
额定负载 Rating Load	15A/250VAC
触点形式 Contact Form	1C
引出电缆 Outgoing Cable	--
防护等级 Protection Degree	IP65

• XF-402



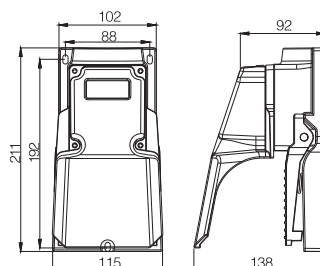
材 质 Material	铝合金(Aluminium)
内置开关 Inner Switch	XZ-15GW22-B
额定负载 Rating Load	15A/250VAC
触点形式 Contact Form	1C
引出电缆 Outgoing Cable	--
防护等级 Protection Degree	IP65

• XF-502



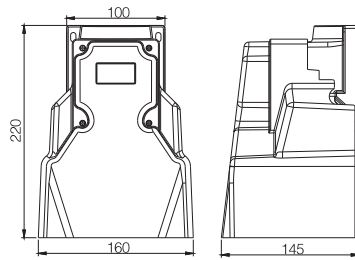
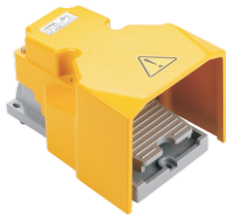
材 质 Material	铝合金(Aluminium)
内置开关 Inner Switch	XZ-15GW22-B
额定负载 Rating Load	15A/250VAC
触点形式 Contact Form	1C
引出电缆 Outgoing Cable	--
防护等级 Protection Degree	IP65

• XF-302B



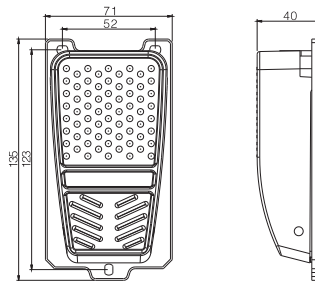
材 质 Material	铝合金(Aluminium)
内置开关 Inner Switch	XZ-15GW22-B
额定负载 Rating Load	15A/250VAC
触点形式 Contact Form	1C
引出电缆 Outgoing Cable	--
防护等级 Protection Degree	IP65

• XF-502B



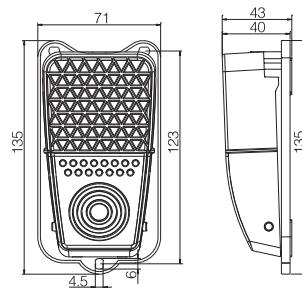
材 质 Material	铝合金(Aluminium)
内置开关 Inner Switch	XZ-15GW22-B
额定负载 Rating Load	15A/250VAC
触点形式 Contact Form	1C
引出电缆 Outgoing Cable	--
防护等级 Protection Degree	IP65

• XF-4



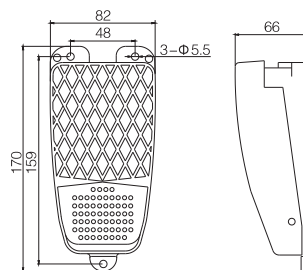
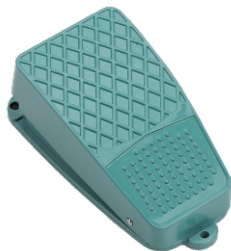
材 质 Material	铝合金(Aluminium)
内置开关 Inner Switch	XV-15-1C25
额定负载 Rating Load	10A/250VAC
触点形式 Contact Form	1C
引出电缆 Outgoing Cable	0.5mm ² × 3芯(Wire) × 0.25m
防护等级 Protection Degree	IP54

• XF-5



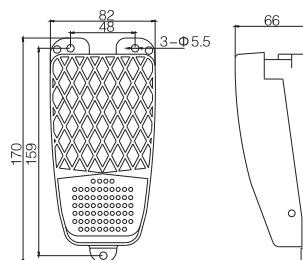
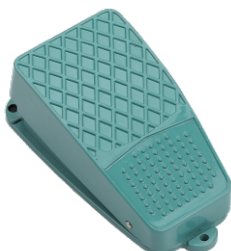
材 质 Material	铝合金(Aluminium)
内置开关 Inner Switch	XV-15-1C25
额定负载 Rating Load	10A/250VAC
触点形式 Contact Form	1C
引出电缆 Outgoing Cable	0.5mm ² × 3芯(Wire) × 0.25m
防护等级 Protection Degree	IP54

• XF-101



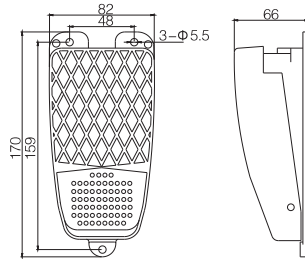
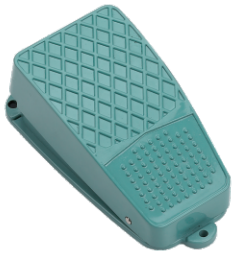
材 质 Material	ABS工程塑料(Plastic)
内置开关 Inner Switch	XZ-15GW22-B
额定负载 Rating Load	15A/250VAC
触点形式 Contact Form	1C
引出电缆 Outgoing Cable	0.75mm ² × 3芯(Wire) × 0.25m
防护等级 Protection Degree	IP54

• XF-102



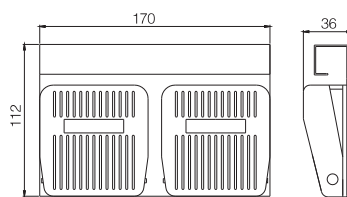
材 质 Material	ABS工程塑料(Plastic)
内置开关 Inner Switch	XV-15-1C25
额定负载 Rating Load	10A/250VAC
触点形式 Contact Form	1C
引出电缆 Outgoing Cable	0.5mm ² × 3芯(Wire) × 0.25m
防护等级 Protection Degree	IP54

• XF-103



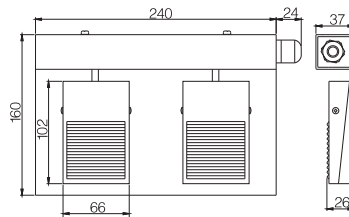
材 质 Material	ABS工程塑料(Plastic)
内置开关 Inner Switch	XV-15-1C25
额定负载 Rating Load	10A/250VAC
触点形式 Contact Form	2C
引出电缆 Outgoing Cable	0.5mm ² × 6芯(Wire) × 0.25m
防护等级 Protection Degree	IP54

• XF-201D



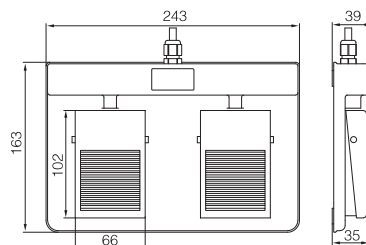
材 质 Material	ABS工程塑料(Plastic)+钢板(Steel)
内置开关 Inner Switch	XV-15-1C25
额定负载 Rating Load	10A/250VAC
触点形式 Contact Form	1C × 2
引出电缆 Outgoing Cable	0.5mm ² × 6芯(Wire) × 0.25m
防护等级 Protection Degree	IP54

• XF-1D



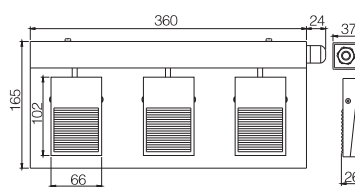
材 质 Material	钢板(Steel)
内置开关 Inner Switch	XV-15-1C25
额定负载 Rating Load	10A/250VAC
触点形式 Contact Form	1A × 2
引出电缆 Outgoing Cable	0.5mm ² × 4芯(Wire) × 0.25m
防护等级 Protection Degree	IP54

• XF-1D(P)



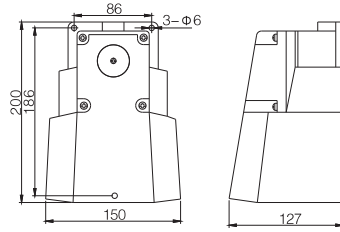
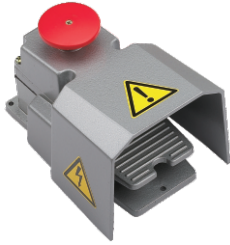
材 质 Material	ABS工程塑料(Plastic)
内置开关 Inner Switch	XV-15-1C25
额定负载 Rating Load	10A/250VAC
触点形式 Contact Form	1A × 2
引出电缆 Outgoing Cable	0.5mm ² × 4芯(Wire) × 0.25m
防护等级 Protection Degree	IP54

• XF-1T



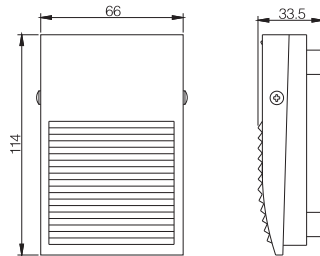
材 质 Material	钢板(Steel)
内置开关 Inner Switch	XV-15-1C25
额定负载 Rating Load	10A/250VAC
触点形式 Contact Form	1A × 3
引出电缆 Outgoing Cable	0.5mm ² × 6芯(Wire) × 0.25m
防护等级 Protection Degree	IP54

• XF-502S



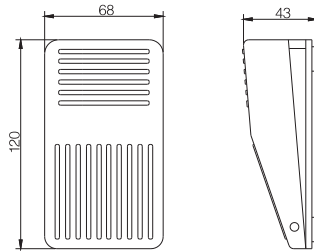
材 质 Material	铝合金(Aluminium)
内置开关 Inner Switch	XZ-15GW22-B
额定负载 Rating Load	15A/250VAC
触点形式 Contact Form	1C+1C
引出电缆 Outgoing Cable	--
防护等级 Protection Degree	IP65

• XF-81



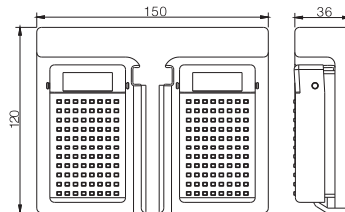
材 质 Material	铝合金(Aluminium)
内置开关 Inner Switch	XV-15-1C25
额定负载 Rating Load	10A/250VAC
触点形式 Contact Form	1C
引出电缆 Outgoing Cable	0.5mm ² × 3芯(Wire) × 0.25m
防护等级 Protection Degree	IP54

• XF-82



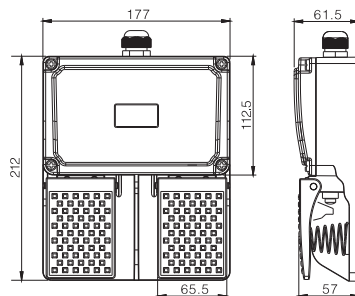
材 质 Material	铝合金(Aluminium)
内置开关 Inner Switch	XV-15-1C25
额定负载 Rating Load	10A/250VAC
触点形式 Contact Form	1C
引出电缆 Outgoing Cable	0.5mm ² × 3芯(Wire) × 0.25m
防护等级 Protection Degree	IP54

• XF-85



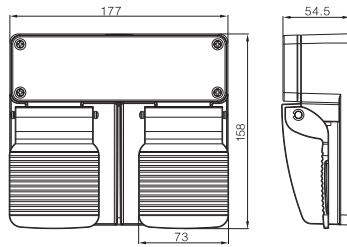
材 质 Material	ABS工程塑料(Plastic)
内置开关 Inner Switch	XV-15-1C25
额定负载 Rating Load	10A/250VAC
触点形式 Contact Form	1A × 2
引出电缆 Outgoing Cable	0.5mm ² × 4芯(Wire) × 0.25m
防护等级 Protection Degree	IP54

• XF-86



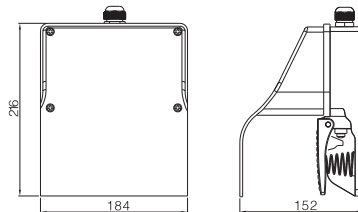
材 质 Material	铝合金(Aluminium)
内置开关 Inner Switch	慢动型(Slow Action Type)
额定负载 Rating Load	16A/250VAC
触点形式 Contact Form	1NC1NO × 2
引出电缆 Outgoing Cable	--
防护等级 Protection Degree	IP65

• XF-86S



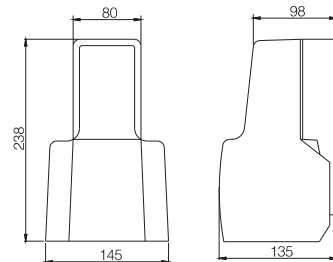
材 质 Material	铝合金(Aluminium)
内置开关 Inner Switch	XV-15-1C25
额定负载 Rating Load	10A/250VAC
触点形式 Contact Form	1C × 2
引出电缆 Outgoing Cable	--
防护等级 Protection Degree	IP65

• XF-87



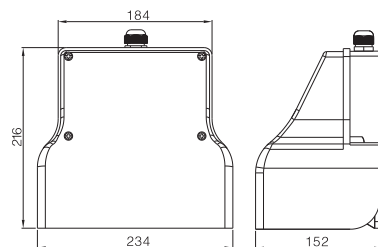
材 质 Material	铝合金(Aluminium)
内置开关 Inner Switch	慢动型(Slow Action Type)
额定负载 Rating Load	16A/250VAC
触点形式 Contact Form	1NC1NO × 2
引出电缆 Outgoing Cable	--
防护等级 Protection Degree	IP65

• XF-88



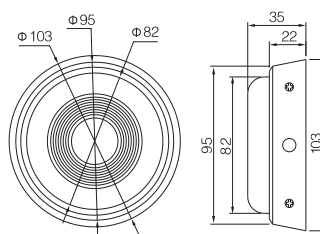
材 质 Material	铝合金(Aluminium)
内置开关 Inner Switch	慢动型(Slow Action Type)
额定负载 Rating Load	10A/250VAC
触点形式 Contact Form	1NC1NO
引出电缆 Outgoing Cable	--
防护等级 Protection Degree	IP65

• XF-89



材 质 Material	铝合金(Aluminium)
内置开关 Inner Switch	慢动型(Slow Action Type)
额定负载 Rating Load	16A/250VAC
触点形式 Contact Form	1NC1NO × 2
引出电缆 Outgoing Cable	--
防护等级 Protection Degree	IP65

• XF-91



材 质 Material	ABS工程塑料(Plastic)
内置开关 Inner Switch	XV-15-1C25
额定负载 Rating Load	10A/250VAC
触点形式 Contact Form	1C
引出电缆 Outgoing Cable	0.5mm ² × 3芯(Wire) × 1m
防护等级 Protection Degree	IP54